

Detailed Spec sheet

Description: Size might be 3% difference

Fabric: COTTON/POLYESTER

Weight/construction:

Block base on:

Comments: (qc no etc):

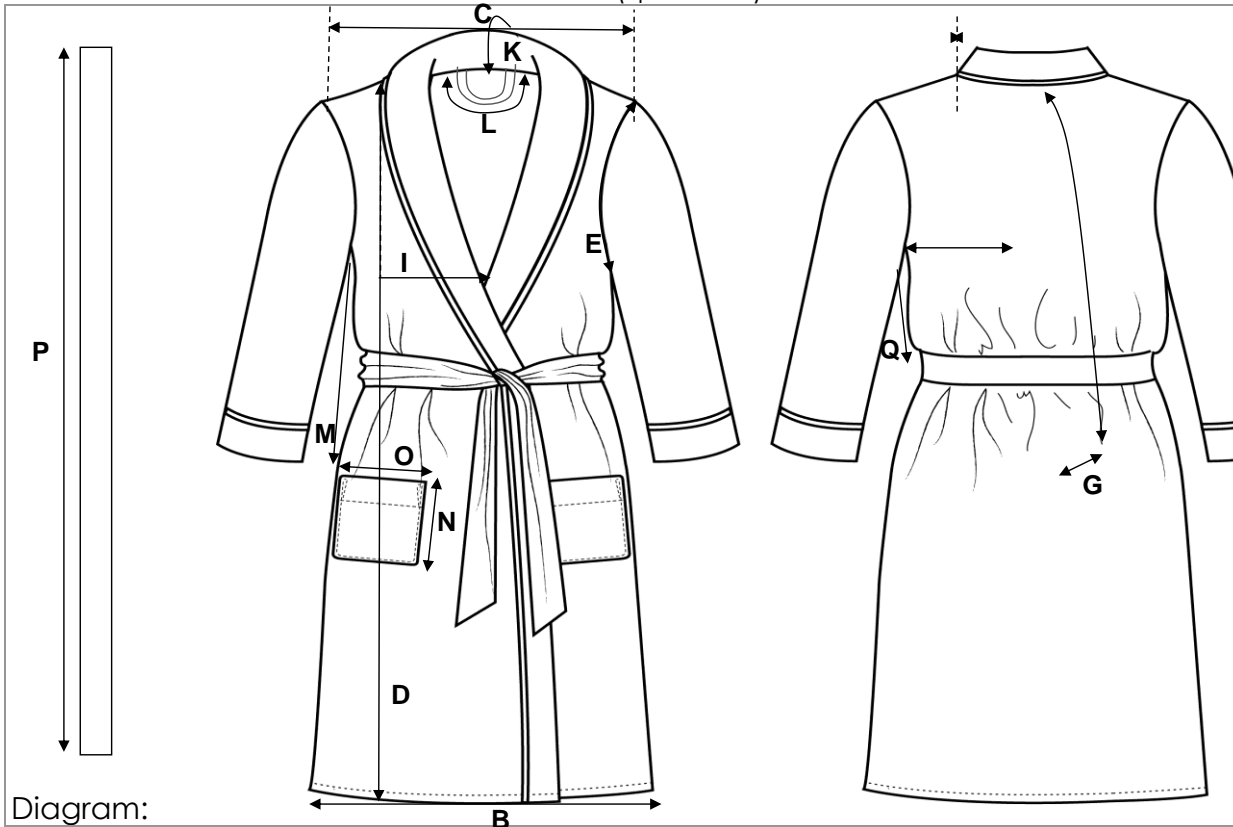


Diagram:

Measurement

To fit sizes	Chinese	Point		XS/ S	M/L	XL/XXL
1/2 Chest- across back seam to seam		A		55	60	65
1/2 Hem- side seam to seam		B		60,5	65,5	70,5
Shoulder point to point		C		46	48	50
Length from side neck to hem		D		118	120	122
1/2 armhole		E		25	27	29
Sleeve length		F		57	59	61
1/2 sleeve opening		G		17	18	19
Neck width-seam to seam		H		19,5	20,5	21,5
Front neck drop-to seam		I		22	22	22
Back neck drop- to seam		J		2	2	2
CB collar width		K		13	13	13
CB hanging loop		L		11	11	11
Pocket position from u/arm		M		18	19	20
Pocket length		N		17	17	17
Pocket width		O		15	15	15
Belt length- 4.5cm wide		P		175	185	195
Belt loop position from u/arm		Q		14	15	16